


Lesson 6 Prefixes

Get the Idea

 A **prefix** is a word part that is added to the beginning of a **base word**.
The prefix changes the meaning of the base word.

 The prefix **un-** means "not."

un- + happy **un**happy



 The prefix **re-** means "again."

re- + use **re**use



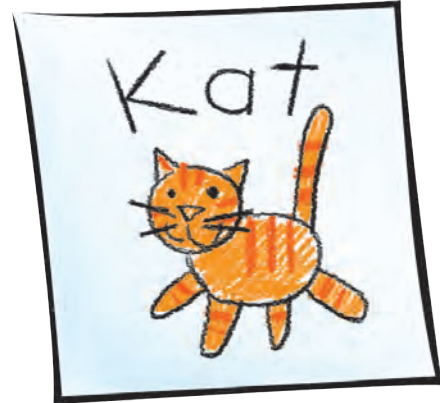
.....

Draw a line under the words that have a prefix that means "not."
Circle the words that have a prefix that means "again."

unclean unpack reread rewrite
reattach retest unfair unbuckled

 The prefix **mis-** means “wrong.”

mis- + spell **misspell**



 The prefix **pre-** means “before.”

pre- + school **preschool**



.....

Draw a line under the words that have a prefix that means “wrong.”
Circle the words that have a prefix that means “before.”

misspeak preheat predawn mismatch
preplan preview mislead misprint

Think About It

★ A prefix can be added to the beginning of a word.

Draw a line from the prefix to a word next to a picture to make a new word.

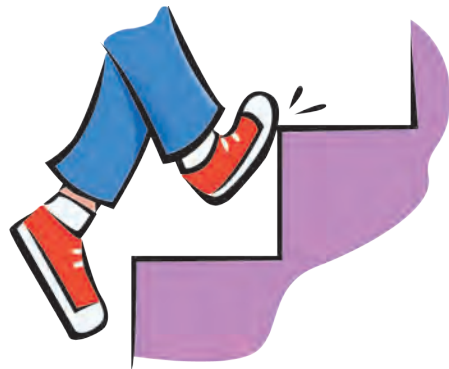
mis-

clean



un-

step



pre-

paint



re-

heat



★ The prefix **un-** means “not.” The prefix **mis-** means “wrong.”

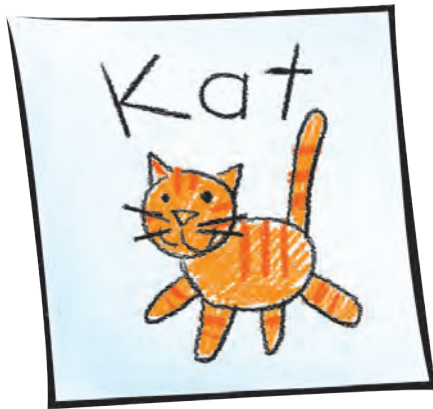
Add a prefix to each word.



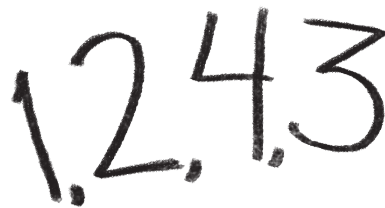
 _____ tied



 _____ pack



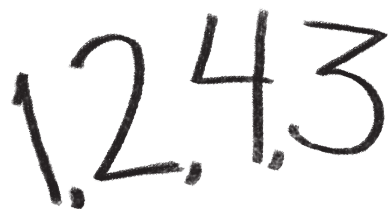
 _____ spell



 _____ count

Try It!

Which word has a prefix? Circle the prefix.



miscount



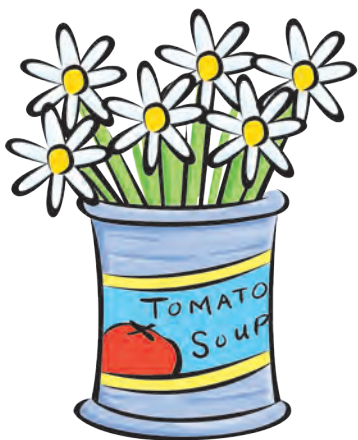
mirror



messy



Which word means "use again"? Circle it.



reuse



reed



rest